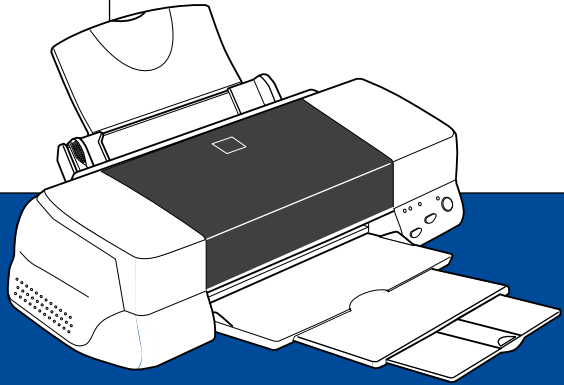


EPSON

Color Ink Jet Printer



EPSON STYLUS[®] PHOTO 1270

Daily Use

4011290
XXX-00

Where to Find Information

Setup Guide

- ❑ This guide will help you set up and begin using your printer. It includes information on setting up your printer and installing the printer software.

Daily Use Guide

- ❑ This guide provides information on daily printer operation. It also contains troubleshooting tips and customer support information.

Online Guides included on the CD-ROM

The guides on the CD-ROM included with your printer will help you learn more about your printer and color printing. To view these guides, you must have a Web browser installed on your computer. For more information on using this CD-ROM, see the included *CD-ROM Booklet*.

- ❑ ***Reference Guide*** Provides detailed information about printer software settings, printing on special paper, maintenance, and problem solving.
- ❑ ***Color Guide*** Includes sample images, explanations and troubleshooting information that will help answer your questions about color imaging and printing.

All rights reserved. No part of this publication may be reproduced, stored in a retrieval system, or transmitted in any form or by any means, electronic, mechanical, photocopying, recording, or otherwise, without the prior written permission of SEIKO EPSON CORPORATION. The information contained herein is designed only for use with this EPSON printer. EPSON is not responsible for any use of this information as applied to other printers.

Neither SEIKO EPSON CORPORATION nor its affiliates shall be liable to the purchaser of this product or third parties for damages, losses, costs, or expenses incurred by the purchaser or third parties as a result of: accident, misuse, or abuse of this product or unauthorized modifications, repairs, or alterations to this product, or (excluding the U.S.) failure to strictly comply with SEIKO EPSON CORPORATION's operating and maintenance instructions.

SEIKO EPSON CORPORATION shall not be liable for any damages or problems arising from the use of any options or any consumable products other than those designated as Original EPSON Products or EPSON Approved Products by SEIKO EPSON CORPORATION.

SEIKO EPSON CORPORATION shall not be held liable for any damage resulting from electromagnetic interference that occurs from the use of any interface cables other than those designated as EPSON Approved Products by SEIKO EPSON CORPORATION.

EPSON is a registered trademark and EPSON Stylus is a trademark of SEIKO EPSON CORPORATION.

Microsoft and Windows are registered trademarks of Microsoft Corporation.

General Notice: Other product names used herein are for identification purposes only and may be trademarks of their respective owners. EPSON disclaims any and all rights in those marks.

Copyright © 2000 by SEIKO EPSON CORPORATION, Nagano, Japan.



Printed on Recycled Paper.

Contents

Safety Instructions	1
Important Safety Instructions	1
A Few Precautions	2
ENERGY STAR Compliance	5
For United Kingdom Users	5
Warnings, Cautions, and Notes	6
Printer Parts and Functions	7
Printer Parts and Control Panel Functions	7
Loading Special Paper, Envelopes, and Other Media 9	
Loading Special Paper and Other Media	9
Loading Envelopes	11
Printing with Windows	13
Printer Software Introduction	13
Making Changes to Printer Settings	15
Previewing your printout	24
Getting Information Through Online Help	27
Printing with Macintosh	28
Printer Software Introduction	28
Making Changes to Printer Settings	28
Previewing your printout	37
Replacing Ink Cartridges	40
Maintenance	48
Checking the Print Head Nozzles	48
Cleaning the Print Head	50
Aligning the Print Head	54

Troubleshooting	55
Correcting USB Problems	55
Error Indicators	59
Typical Problems and Solutions	61
Cancelling Printing	63
Where to Get Help	65
Options and Consumable Products	72
Options and Consumable Products	72

Safety Instructions

Important Safety Instructions

Read all of these instructions before using your printer. Also be sure to follow all warnings and instructions marked on the printer.

- Do not block or cover the openings in the printer's cabinet. Do not insert objects through the slots.
- Take care not to spill liquid on the printer.
- Use only the type of power source indicated on the printer's label.
- Connect all equipment to properly grounded power outlets. Avoid using outlets on the same circuit as photocopiers or air control systems that regularly switch on and off.
- Avoid electrical outlets controlled by wall switches or automatic timers.
- Keep the entire computer system away from potential sources of electromagnetic interference, such as loudspeakers or the base units of cordless telephones.
- Do not use a damaged or frayed power cord.
- If you use an extension cord with the printer, make sure the total ampere rating of the devices plugged into the extension cord does not exceed the cord's ampere rating. Also, make sure the total ampere rating of all devices plugged into the wall outlet does not exceed the wall outlet's ampere rating.
- Do not attempt to service the printer yourself.

- ❑ Unplug the printer and refer servicing to qualified service personnel under the following conditions:

The power cord or plug is damaged; liquid has entered the printer; the printer has been dropped or the cabinet damaged; the printer does not operate normally or exhibits a distinct change in performance.

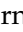
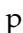
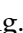
- ❑ If you use the printer in Germany, observe the following:

To provide adequate short-circuit protection and over-current protection for this printer, the building installation must be protected by a 16 Amp circuit breaker.

Bei Anschluß des Druckers an die Stromversorgung muß sichergestellt werden, daß die Gebäudeinstallation mit einem 16 A-Überstromschalter abgesichert ist.

A Few Precautions

When using the printer

- ❑ Do not put your hand inside the printer or touch the ink cartridges during printing.
- ❑ Do not move the print head by hand; otherwise, you may damage the printer.
- ❑ Always turn the printer off using the  power button. When this button is pressed, the  power light flashes briefly then goes off. Do not unplug the printer or turn off the power to the outlet until the  power light stops flashing.
- ❑ Before transporting the printer, make sure the print head is in the home (far right) position and the ink cartridges are in place.

When handling the ink cartridges

- ❑ Keep ink cartridges out of the reach of children. Do not allow children to drink from or otherwise handle the cartridges.
- ❑ Be careful when you handle the used ink cartridges, as there may be some ink around the ink supply port. If ink gets on your skin, wash the area thoroughly with soap and water. If ink gets in your eyes, flush them immediately with water. If discomfort or vision problems remain after a thorough flushing, see a doctor immediately.
- ❑ Do not shake an ink cartridge; this can cause leakage.
- ❑ Install the ink cartridge immediately after you remove it from its package. If you leave a cartridge unpacked for a long time before using it, normal printing may not be possible.
- ❑ Do not use an ink cartridge beyond the date printed on the cartridge carton: otherwise, it may result in reduced print quality. For best results, use up the ink cartridges within six months of first installing them.
- ❑ Do not touch the green chip on the side of the cartridge. This may inhibit normal operation and printing.
- ❑ Do not dismantle the ink cartridges. This could damage the print head.
- ❑ After bringing an ink cartridge inside from a cold storage site, allow it to warm up at room temperature for at least three hours before using it.
- ❑ Store ink cartridges in a cool, dark place.
- ❑ In this ink cartridge, the IC chip retains a variety of cartridge-related information, such as the amount of ink remaining, so that a cartridge may be removed and reinserted freely. However, each time the cartridge is inserted, some ink is consumed because the printer automatically performs a reliability check.

- ❑ If you remove an ink cartridge for later use, be sure to protect the ink supply area from dirt and dust; store it in the same environment as the printer. Note that there is a valve in the ink supply port, making covers or plugs unnecessary, but care is needed to prevent the ink from staining items that the cartridge touches. Do not touch the ink cartridge ink supply port or surrounding area.

When choosing a place for the printer

- ❑ Place the printer on a flat, stable surface that is larger than the printer. The printer will not operate properly if it is tilted or at an angle.
- ❑ Avoid places subject to rapid changes in temperature and humidity. Also, keep the printer away from direct sunlight, strong light, or heat sources.
- ❑ Avoid places subject to shocks and vibrations.
- ❑ Leave enough room around the printer to allow for sufficient ventilation.
- ❑ Place the printer near a wall outlet where the plug can be easily unplugged.

Note for French-speaking users:

Placez l'imprimante près d'une prise de contact où la fiche peut être débranchée facilement.

ENERGY STAR Compliance



As an ENERGY STAR Partner, EPSON has determined that this product meets the ENERGY STAR guidelines for energy efficiency.

The International ENERGY STAR Office Equipment Program is a voluntary partnership with the computer and office equipment industry to promote the introduction of energy-efficient personal computers, monitors, printers, fax machines, and copiers in an effort to reduce air pollution caused by power generation.

For United Kingdom Users

Use of options

EPSON (UK) Limited shall not be liable against any damages or problems arising from the use of any options or consumable products other than those designated as Original EPSON Products or EPSON Approved Products by EPSON (UK) Limited.

Safety information



Warning:

This appliance must be earthed. Refer to the rating plate for voltage and check that the appliance voltage corresponds to the supply voltage.

Important:

The wires in the mains lead fitted to this appliance are coloured in accordance with the following code:

Green and yellow — Earth

Blue — Neutral

Brown — Live

If you have to fit a plug:

As the colours of the mains lead of this appliance may not match coloured markings used to identify the terminals in a plug, please proceed as follows:

The green and yellow wire must be connected to the terminal in the plug which is marked with the letter E or the earth symbol (\perp).

The blue wire must be connected to the terminal in the plug marked with the letter N.

The brown wire must be connected to the terminal in the plug marked with the letter L.

If damage occurs to the plug, replace the cord set or consult a qualified electrician.

Replace fuses only with a fuse of the correct size and rating.

Warnings, Cautions, and Notes

**Warnings**

must be followed carefully to avoid bodily injury.

**Cautions**

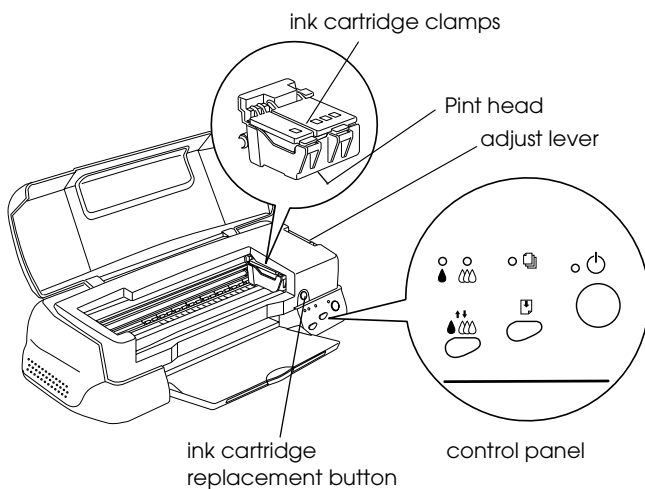
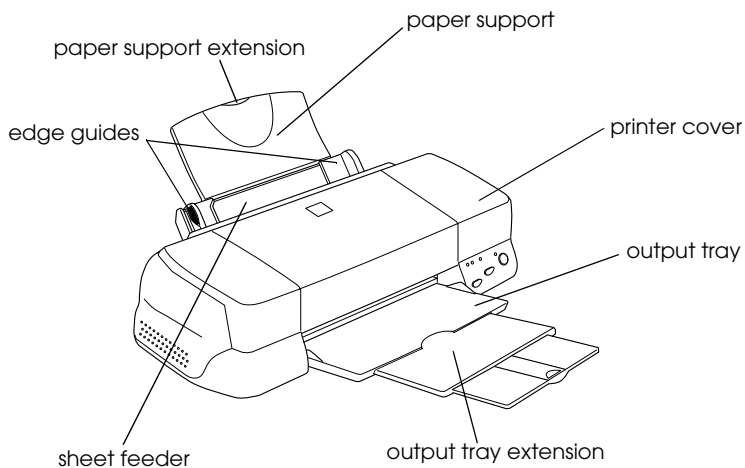
must be observed to avoid damage to your equipment.

Notes






contain important information and useful tips on the operation of your printer.

Printer Parts and Functions






Printer Parts and Control Panel Functions



Buttons

Button	Function
 power	Turns the printer on and off. Clears the printer's memory if pressed twice while the power is on.
 load/eject	Loads or ejects paper if pressed and released within 2 seconds. Resumes printing if pressed and released after a paper out error.
 cleaning	Performs print head cleaning if held for 3 seconds when the  black or  color ink out light is off.
Ink cartridge replacement	Charges ink to the printer when you replace the ink cartridges (this orange button is located under the printer cover, not in the control panel).

Lights

Light	Description
 power	On when the printer is on. Flashes when printer is receiving data, printing, replacing an ink cartridge, charging ink, or cleaning the print head.
 paper out	On when the printer is out of paper. Load paper in the sheet feeder, then press the  load/eject button to resume printing. Flashes when the paper is jammed. Take all of the paper out of the feeder, then reload the paper. If the light continues to flash, turn off the printer and gently pull all the paper out of the printer.
 black ink out	Flashes when the black ink cartridge is nearly empty. On when the black ink cartridge is empty. Replace the black ink cartridge (T007 or T010).
 color ink out	Flashes when the color ink cartridge is nearly empty. On when the color ink cartridge is empty. Replace the color ink cartridge (T009).

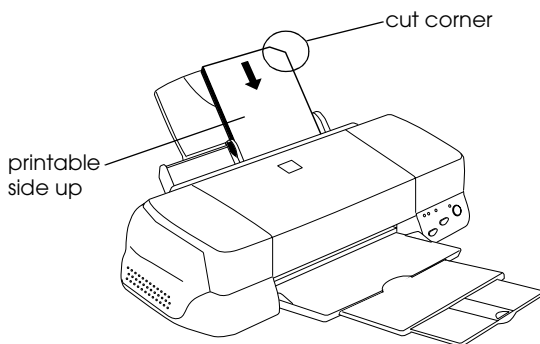
Loading Special Paper, Envelopes, and Other Media

Loading Special Paper and Other Media

You can print on a wide variety of special media, including ink jet paper, photo quality glossy film, photo paper, transparencies, index cards, and adhesive sheets.

When loading special media distributed by EPSON, read the instruction sheets packed with the media first and keep the following points in mind. For more details on using such media, see “Paper Handling” in the online *Reference Guide*.

- ❑ Make sure the printable side of the paper is facing up when loading media into the sheet feeder. See the instruction sheets packed with the media to determine which side is the printable surface. Some media have cut corners to help identify the correct loading direction, as shown in the illustration.



- ❑ Make sure the paper stack fits under the arrow mark located on the inside surface of the left edge guide.

❑ The loading capacity for EPSON special media is explained below.

360 dpi Ink Jet Paper and Photo Quality Ink Jet Paper Up to the arrow mark on the left edge guide.

Photo Quality Ink Jet Card, Ink Jet Note Card, and Ink Jet Greeting Card Up to 30 index cards.
Always place the included support sheet* under the cards.

Photo Quality Glossy Film One sheet at a time.
Always put a support sheet* or a sheet of plain paper under the glossy film.
If you wish to load multiple sheets, set the minimum top margin of the page to 30 mm and load a maximum of 20 sheets for A4. For A3 and Super A3 size, you can load up to 5 sheets at a time.

Ink Jet Transparencies Up to 30 transparencies.
Always put a sheet of plain paper under the stack of transparencies.

Photo Quality Self Adhesive Sheet One sheet at a time.

Photo Paper Up to 20 sheets.
For 200 × 300 mm Photo Paper, you can only load one sheet at a time. Always put a support sheet* under the stack of Photo Paper.

Photo Stickers 16 and Photo Stickers 4 One sheet at a time.
Always put the included support sheets* A and B under the stack of Photo Stickers.

Panoramic Photo Paper and Iron-On Cool Peel Transfer Paper One sheet at a time.

Premium Glossy Photo Paper One sheet at a time.

Matte Paper-Heavyweight Up to 20 sheets.
For A3 and Super A3 size, you can only load one sheet at a time. Always put a support sheet* under the stack of Matte Paper-Heavyweight.

Ink Jet Back Light Film

One sheet at a time.
Always put a sheet of plain paper under back light film.

- * Take care not to print on support sheets loaded under special media.

About special media cleaning sheets

Cleaning sheets packaged with EPSON special media should not be used with this printer. The cleaning function performed by these sheets is not necessary with this type of printer, and the sheets could jam in the printer.

Loading Envelopes

When printing on envelopes, please note the following:

- You can load up to 10 envelopes into the sheet feeder.

Note:

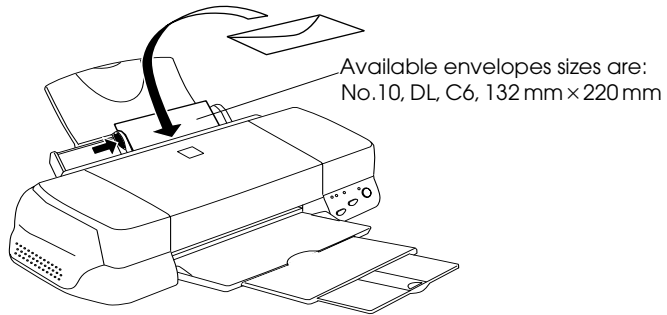
The folding quality and thickness of envelopes varies widely. If the total thickness of the stack of envelopes exceeds 10 mm, press each envelope in the stack flat before loading.

- Set the adjust lever to the “+” position. To do this, open the printer cover and reposition the lever.

Note:

- Return the adjust lever to the “0” position, which is the normal position, after you finish printing on envelopes. Leaving the lever in the “+” position may cause gaps to appear in images printed on other media.*
- When the adjust lever is in the “+” position, make sure the High Speed setting in the printer driver’s Advanced dialog box is off. To turn this option off, you may also need to change the Print Quality setting.*

- ❑ Load envelopes flap edge first with the flap side down, as shown in the illustration.



- ❑ Do not use envelopes that are curled or folded. Make sure to flatten the envelope flaps before loading. Also avoid using envelopes that are too thin; they may curl during printing.
- ❑ Select Plain Paper as the Media Type setting in the printer driver.

Printing with Windows

Printer Software Introduction

The printer software which comes with your printer includes a printer driver and printer utilities. The printer driver lets you choose from a wide variety of settings to get the best results from your printer. The printer utilities help you check the printer and keep it in top condition.

Getting more information

For information on using the printer driver, see “Making Changes to Printer Settings” on page 15.

For information on using the printer utilities, see “Using the Printer Utilities” in the online *Reference Guide*.

Note:

The specific features available in the printer software vary depending on the version of Windows you are using.

Online help provides more information about the printer software. See “Getting Information Through Online Help” on page 27 for instructions on accessing help.

Accessing the printer software

You can access the printer software from most Windows applications, or from the Windows Start menu (Windows 95, 98 and NT 4.0).

When you access the printer software from a Windows application, the settings you make apply only to the application you are using.

When you access the printer software from the Start menu, the settings you make apply to all of your Windows applications.

From Windows applications

1. From the File menu, click Print or Print Setup.
2. In the dialog box that appears, click Printer, Setup, Options, or Properties. (Depending on your application, you may need to click a combination of these buttons.) The printer driver opens.

From the Windows Start menu

1. Click Start, point to Settings, then click Printers.
2. For Windows 95 and 98, select your printer, then click Properties on the File menu. For Windows NT 4.0, select your printer, then click Document Defaults on the File menu. The printer driver opens.

Making Changes to Printer Settings

The printer driver features the following menus and settings.

Main:	Media Type, Ink, Mode
Paper:	Paper Size, Copies, Orientation, Paper Source Printable Area
Layout:	Reduce/Enlarge, Multi-Page, Watermark

The Mode settings on the Main menu are arranged to give you four levels of control over the printer driver, as explained below.

Automatic	This mode provides the quickest and easiest way to start printing. See "Using the Automatic mode" on page 20.
PhotoEnhance	This mode lets you choose from a variety of image-correction settings specially designed for photos. See "Using the PhotoEnhance mode" on page 21.
Custom	This mode lets you choose from a list of ready-made or personalized settings suited to the kind of document you want to print. When Custom is selected, the Advanced button is enabled, allowing you to access the Advanced dialog box. See "Using the Custom mode" on page 23.
Advanced	This button opens the Advanced dialog box, where you can make detailed settings to fit your individual needs. From the Advanced dialog box, you can add your personalized settings to the Custom Settings list.

In addition to making comprehensive Mode settings that affect overall print quality, you can also modify individual aspects of your printout using the Paper and Layout menus. For more information about the Paper and Layout menus, see your online *Reference Guide*.

Making the Media Type setting

The Media Type setting determines what other settings are available, so you should always make this setting first.

On the Main menu, select the Media Type setting that matches the media which is loaded in the printer. To find out what Media Type you are using, find your media in the list below, and refer to the corresponding Media Type under which it is grouped (shown in larger type). For some media, there are several Media Type settings to choose from.

Plain Paper

Plain paper

Envelopes

EPSON Premium Ink Jet Plain Paper (A4)	S041214
--	---------

360 dpi Ink Jet Paper

EPSON 360 dpi Ink Jet Paper (A4)	S041059
	S041025

EPSON 360 dpi Ink Jet Paper (Letter)	S041060
	S041028

EPSON 360 dpi Ink Jet Paper (A3)	S041065
	S041046

EPSON 360 dpi Ink Jet Paper (Super A3/B)	S041066
	S041047

EPSON Iron-On Cool Peel Transfer Paper (A4)	S041154
---	---------

EPSON Iron-On Cool Peel Transfer Paper (Letter)	S041153
	S041155

EPSON Iron-On Cool Peel Transfer Paper (A3)	S041238
---	---------

Photo Quality Ink Jet Paper

EPSON Photo Quality Ink Jet Paper (A4)	S041061 S041026
EPSON Photo Quality Ink Jet Paper (Letter)	S041062 S041029
EPSON Photo Quality Ink Jet Paper (Legal)	S041067 S041048
EPSON Photo Quality Ink Jet Paper (A3)	S041068 S041045
EPSON Photo Quality Ink Jet Paper (Super A3/B)	S041069 S041043
EPSON Photo Quality Ink Jet Paper (B)	S041070 S041044
EPSON Photo Quality Ink Jet Card (A6)	S041054
EPSON Photo Quality Ink Jet Card (5 × 8")	S041121
EPSON Photo Quality Ink Jet Card (8 × 10")	S041122
EPSON Photo Quality Self Adhesive Sheet (A4)	S041106
EPSON Ink Jet Note Cards A6 (with envelopes)	S041147
EPSON Ink Jet Greeting Cards 5 × 8" (with envelopes)	S041148
EPSON Ink Jet Greeting Cards 8 × 10" (with envelopes)	S041149

Matte Paper-Heavyweight

EPSON Matte Paper-Heavyweight (A4)	S041256 S041258 S041259
EPSON Matte Paper-Heavyweight (Letter)	S041257
EPSON Matte Paper-Heavyweight (A3)	S041260 S041261 S041262
EPSON Matte Paper-Heavyweight (Super A3/ Super B)	S041263 S041264 S041265

Photo Paper

EPSON Photo Paper (A4)	S041140
EPSON Photo Paper (Letter)	S041141
EPSON Photo Paper (A3)	S041142
EPSON Photo Paper (Super A3/Super B)	S041143
EPSON Photo Paper (B)	S041156
EPSON Photo Paper (4 × 6")	S041134
EPSON Photo Paper (100 × 150 mm)	S041255
EPSON Photo Paper (200 × 300 mm)	S041254
EPSON Photo Paper (89mm × 7M)	S041281
EPSON Photo Paper (100mm × 8M)	S041279
EPSON Photo Paper (210mm × 10M)	S041280
EPSON Photo Paper (329mm × 10M)	S041233
EPSON Panoramic Photo Paper (210 × 594 mm)	S041145
EPSON Photo Paper Cards (A4)	S041177

Photo Quality Glossy Film

EPSON Photo Quality Glossy Film (A4)	S041071
EPSON Photo Quality Glossy Film (Letter)	S041072
EPSON Photo Quality Glossy Film (A3)	S041073
EPSON Photo Quality Glossy Film (Super A3/B)	S041074
EPSON Photo Quality Glossy Film (B)	S041075
EPSON Photo Quality Glossy Film (A6)	S041107
EPSON Photo Stickers 16 (A6)	S041144
EPSON Photo Stickers 4 (A6)	S041176

Ink Jet Transparencies

EPSON Ink Jet Transparencies (A4)	S041063
EPSON Ink Jet Transparencies (Letter)	S041064

Premium Glossy Photo Paper

EPSON Premium Glossy Photo Paper (A4)	S041287
	S041297
EPSON Premium Glossy Photo Paper (Letter)	S041286
EPSON Premium Glossy Photo Paper (A3)	S041288
EPSON Premium Glossy Photo Paper (B)	S041289
EPSON Premium Glossy Photo Paper (Super A3/ Super B)	S041290

Ink Jet Back Light Film

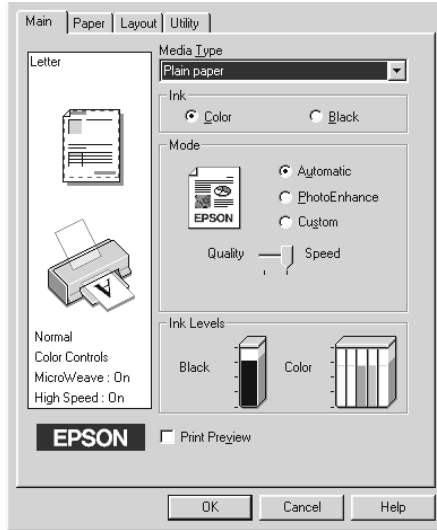
EPSON Ink Jet Back Light Film (A3)	S041131
------------------------------------	---------

Note:

The availability of special media varies by location.

Using the Automatic mode

When Automatic is selected as the Mode setting on the Main menu, the printer driver takes care of all detailed settings based on the current Media Type and Ink settings. To make the Ink setting, click Color to print in color, or Black to print in black-and-white or grayscale. To make the Media Type setting, see “Making the Media Type setting” on page 16.

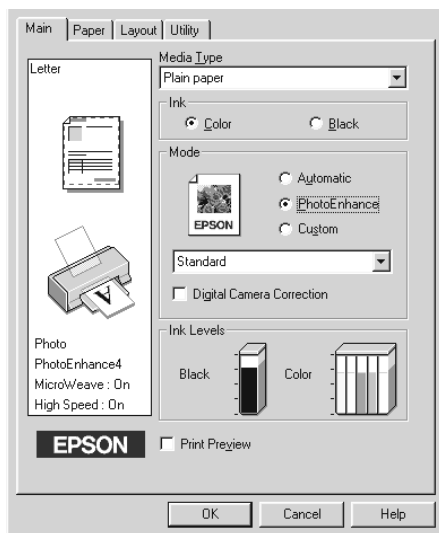


Note:

- ❑ Depending on the media selected in the Media Type list (while Automatic is selected), a slider appears under the Custom radio button that lets you choose from Quality or Speed settings. Select Quality when print quality is more important than speed.
- ❑ Most Windows applications feature paper size and page layout settings that override similar settings on the printer driver. However, if your application does not have these settings, verify the settings on the printer driver's Paper menu.

Using the PhotoEnhance mode

The PhotoEnhance mode provides a variety of image-correction settings that you can apply to your photo images before printing. PhotoEnhance does not affect your original data.



Note:

- ❑ This mode is only available when printing 32-bit color data.
- ❑ Printing with PhotoEnhance selected may increase the time required for printing, depending on your computer system and the amount of data contained in your image.
- ❑ Do not print using PhotoEnhance mode if Roll Paper is selected as the Paper Source on the Paper menu.

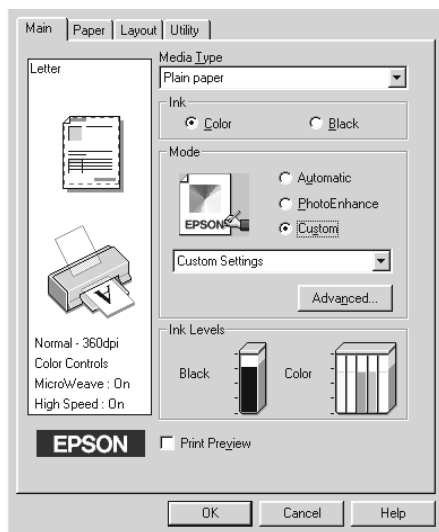
You can select from the following settings.

Standard	This setting provides standard image correction for most photos. Try this first.
People	This setting is best for photos of people.
Nature	This setting is best for outdoor scenery such as mountains, sky, and oceans.
Soft Focus	This setting makes your photos look as if they were taken with a soft-focus lens.
Sepia	This setting applies a sepia tone to your photos.

Selecting PhotoEnhance also enables the Digital Camera Correction check box. Select this check box when you are printing photos taken with a digital camera to give your printed images the smooth, natural appearance of photographs taken with a film camera.

Using the Custom mode

The Custom mode offers ready-made settings designed for printing text and graphs and for applying a color-matching method. You can also create and save your own custom settings.



You can select from the following ready-made settings.

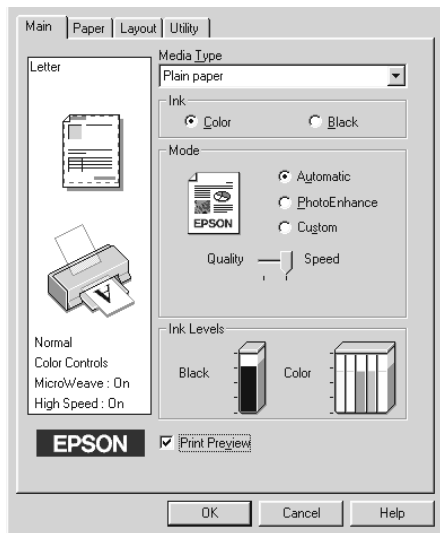
Text/Graph	This setting is good for printing presentation documents such as graphs and charts.
Economy	This setting is best for printing drafts of text
ICM (For Windows 95 and 98)	This setting automatically adjusts printout colors to match colors on your screen. ICM stands for Image Color Matching.
sRGB	This setting is best for color matching with other sRGB devices.

Follow the steps below to select a Custom setting.

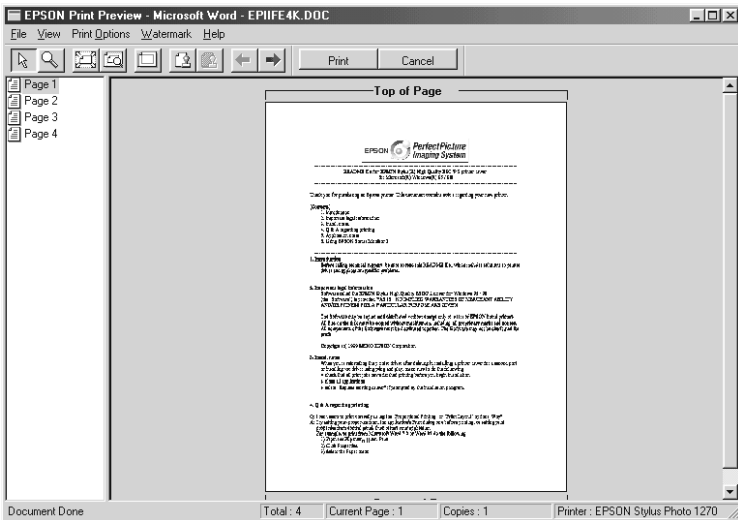
1. Select Custom as the Mode setting on the Main menu.
2. Click anywhere in the list box to open it, then select the most appropriate setting for the type of document or image you wish to print.
3. When you select a Custom setting, other settings such as Print Quality, Halftoning, and Color Adjustment are made automatically. Changes to these settings are reflected in the display on the left side of the Main menu.
4. Before printing, be sure to verify the Media Type and Ink settings, as they may be affected by the Custom setting you select. See “Making the Media Type setting” on page 16.

Previewing your printout






Select the Print Preview check box on the Main menu to see a preview of your document before printing.







When you print your document, the Print Preview window opens.





The Preview dialog box contains several icon buttons which you can use to perform the following functions:

	Drag 'n' drop	This feature lets you select and move watermarks.
	Zoom	This feature enlarges or reduces the size of the previewed page.
	Fit-to-screen	This feature scales the previewed page so that it fits the size of the window. Select this option if you want to see the entire page at one time.
	Maximum zoom	This feature displays the previewed page at the maximum possible zoom ratio.
	Printable area on/off	This feature displays a rectangle on the page being previewed. This rectangle is the printable area for the page. The printer cannot print anything which is outside this rectangle. Press the icon button again to turn this feature off.

	Watermark	This feature opens the watermark settings dialog box. This dialog box allows you to change any of the current watermark settings.
	Reset watermark settings	This feature returns all watermark settings to what they were when the Preview was first opened. If nothing has been changed, this feature is not available.
	Previous page	This feature displays the page previous to the one currently being previewed. If there is no previous page then this feature is not available.
	Next page	This feature displays the next page in the document. If there is no next page then this feature is not available.

You can also manipulate the previewed document in the following ways:

- Select and preview individual pages.
- Reduce or enlarge the size of the preview.
- Select and print any or all pages.
- Apply watermarks. The watermark you select will appear in the previewed image. For detailed information on customizing watermarks, see “Printing a watermark on your document” in your *Reference Guide*.
- The Add and Remove features allow you to specify which pages in the document you wish to be printed. To add or remove a page, you must first click the page icon in the list appearing on the left side of the preview window. Then add or remove it using the commands in the Print Options menu.

	Add page	The highlighted pages will be added to the list of pages to be printed.
	Remove page	The highlighted pages will be removed from the list of pages to be printed.

After you have previewed the document, click Print to print the document, or click Cancel to cancel printing.

Getting Information Through Online Help

Your printer software has an extensive online help feature, which provides you with instructions on printing, making printer driver settings, and using printer utilities.

Accessing help from your application

Open the File menu and choose Print or Print Setup. Then click Printer, Setup, Options, or Properties. (Depending on your application, you may need to click a combination of these buttons.) Click Help at the bottom of the Main, Paper, Layout, and Utility menus for help related to the items on that menu.

For Windows 95, 98, and NT 4.0, you can get specific help related to any item on a menu by right-clicking the item, then clicking the What's This? command.

Accessing help from the Windows Start menu

Click the Start button, point to Programs and Epson (for Windows 95 and 98) or EPSON Printers (for Windows NT 4.0), then click EPSON Stylus Photo 1270 Help. The help contents window opens.

Printing with Macintosh

Printer Software Introduction

The printer software which comes with your printer includes a printer driver and printer utilities. The printer driver lets you choose from a wide variety of settings to get the best results from your printer. The printer utilities help you check the printer and keep it in top condition.



For information on using the printer driver, see “Making Changes to Printer Settings” on page 28.


For information on using the printer utilities, see “Using the Printer Utilities” in the online *Reference Guide*.

You can also get more information about the printer software by clicking the help icon in any of the dialog boxes in the printer driver.

Making Changes to Printer Settings

You will find the printer driver settings in the following dialog boxes.

- Print dialog box (click Print on the File menu of your application or click Options in the Page Setup dialog box)
- Page Setup dialog box (click Page Setup on the File menu of your application)
- Layout dialog box (click the  Layout icon button in the Print dialog box)
- Background Printing dialog box (click the  Background Printing icon button located in the Print dialog box)

- ❑ Preview dialog box (click the  Preview icon button and then click Preview in the Print dialog box)

The Mode settings in the Print dialog box are arranged to give you four levels of control over the printer driver, as explained below.

Automatic	This mode provides the quickest and easiest way to start printing. See “Using the Automatic mode” on page 34.
PhotoEnhance	This mode lets you choose from a variety of image-correction settings specially designed for photos. See “Using the PhotoEnhance mode” on page 34.
Custom	This mode lets you choose from a list of ready-made or personalized settings suited to the kind of document you want to print. When Custom is selected, the Advanced button is enabled, allowing you to access the Advanced dialog box. See “Using the Custom mode” on page 36.
Advanced	This button opens the Advanced dialog box, where you can make detailed settings to fit your individual needs. From the Advanced dialog box, you can add your personalized settings to the Custom Settings list.

In addition to making comprehensive Mode settings that affect overall print quality, you can also modify individual aspects of your printout using the settings contained in the Page Setup and the Layout dialog boxes. For information on page setup options. For information on page layout options.

Making the Media Type setting

The Media Type setting determines what other settings are available, so you should always make this setting first.

In the Print dialog box, select the Media Type setting that matches the paper you loaded in the printer. To find out what Media Type you are using, find your media in the list below, and refer to the corresponding Media Type under which it is grouped (shown in larger type). For some media, there are several Media Type settings to choose from.

Plain Paper

Plain paper

Envelopes

EPSON Premium Ink Jet Plain Paper (A4)	S041214
--	---------

360 dpi Ink Jet Paper

EPSON 360 dpi Ink Jet Paper (A4)	S041059
	S041025

EPSON 360 dpi Ink Jet Paper (Letter)	S041060
	S041028

EPSON 360 dpi Ink Jet Paper (A3)	S041065
	S041046

EPSON 360 dpi Ink Jet Paper (Super A3/B)	S041066
	S041047

EPSON Iron-On Cool Peel Transfer Paper (A4)	S041154
---	---------

EPSON Iron-On Cool Peel Transfer Paper (Letter)	S041153
	S041155

EPSON Iron-On Cool Peel Transfer Paper (A3)	S041238
---	---------

Photo Quality Ink Jet Paper

EPSON Photo Quality Ink Jet Paper (A4)	S041061 S041026
EPSON Photo Quality Ink Jet Paper (Letter)	S041062 S041029
EPSON Photo Quality Ink Jet Paper (Legal)	S041067 S041048
EPSON Photo Quality Ink Jet Paper (A3)	S041068 S041045
EPSON Photo Quality Ink Jet Paper (Super A3/B)	S041069 S041043
EPSON Photo Quality Ink Jet Paper (B)	S041070 S041044
EPSON Photo Quality Ink Jet Card (A6)	S041054
EPSON Photo Quality Ink Jet Card (5 × 8")	S041121
EPSON Photo Quality Ink Jet Card (8 × 10")	S041122
EPSON Photo Quality Self Adhesive Sheet (A4)	S041106
EPSON Ink Jet Note Cards A6 (with envelopes)	S041147
EPSON Ink Jet Greeting Cards 5 × 8" (with envelopes)	S041148
EPSON Ink Jet Greeting Cards 8 × 10" (with envelopes)	S041149

Matte Paper-Heavyweight

EPSON Matte Paper-Heavyweight (A4)	S041256 S041258 S041259
EPSON Matte Paper-Heavyweight (Letter)	S041257
EPSON Matte Paper-Heavyweight (A3)	S041260 S041261 S041262
EPSON Matte Paper-Heavyweight (Super A3 / Super B)	S041263 S041264 S041265

Photo Paper

EPSON Photo Paper (A4)	S041140
EPSON Photo Paper (Letter)	S041141
EPSON Photo Paper (A3)	S041142
EPSON Photo Paper (Super A3/Super B)	S041143
EPSON Photo Paper (B)	S041156
EPSON Photo Paper (4 × 6")	S041134
EPSON Photo Paper (100 × 150 mm)	S041255
EPSON Photo Paper (200 × 300 mm)	S041254
EPSON Photo Paper (89mm × 7M)	S041281
EPSON Photo Paper (100mm × 8M)	S041279
EPSON Photo Paper (210mm × 10M)	S041280
EPSON Photo Paper (329mm × 10M)	S041233
EPSON Panoramic Photo Paper (210 × 594 mm)	S041145
EPSON Photo Paper Cards (A4)	S041177

Photo Quality Glossy Film

EPSON Photo Quality Glossy Film (A4)	S041071
EPSON Photo Quality Glossy Film (Letter)	S041072
EPSON Photo Quality Glossy Film (A3)	S041073
EPSON Photo Quality Glossy Film (Super A3/B)	S041074
EPSON Photo Quality Glossy Film (B)	S041075
EPSON Photo Quality Glossy Film (A6)	S041107
EPSON Photo Stickers 16 (A6)	S041144
EPSON Photo Stickers 4 (A6)	S041176

Ink Jet Transparencies

EPSON Ink Jet Transparencies (A4)	S041063
EPSON Ink Jet Transparencies (Letter)	S041064

Premium Glossy Photo Paper

EPSON Premium Glossy Photo Paper (A4)	S041287
	S041297
EPSON Premium Glossy Photo Paper (Letter)	S041286
EPSON Premium Glossy Photo Paper (A3)	S041288
EPSON Premium Glossy Photo Paper (B)	S041290
EPSON Premium Glossy Photo Paper (Super A3/ Super B)	S041289

Ink Jet Back Light Film

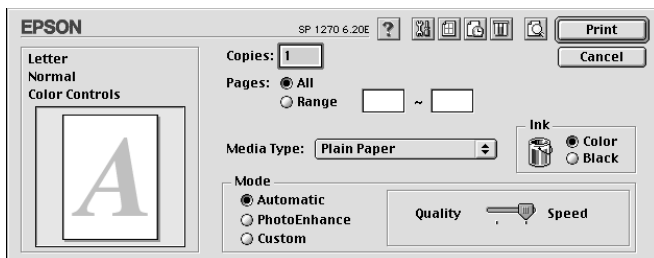
EPSON Ink Jet Back Light Film (A3)	S041131
------------------------------------	---------

Note:

The availability of special media varies by location.

Using the Automatic mode

When Automatic is selected as the Mode setting in the Print dialog box, the printer driver takes care of all detailed settings based on the current Media Type and Ink settings. To make the Ink setting, click Color to print in color, or Black to print in black-and-white or grayscale. To make the Media Type setting, see “Making the Media Type setting” on page 29.

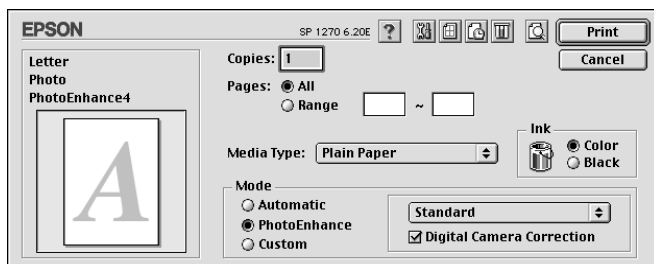


Note:

Depending on the media you choose in the Media Type list (while Automatic is selected), a slider appears to the right of the Mode options that lets you choose Quality, Speed or an intermediate setting. Select Quality when print quality is more important than speed.

Using the PhotoEnhance mode

The Photo Enhance mode provides a variety of image-correction settings that you can apply to your photo images before printing. PhotoEnhance does not affect your original data.



Note:

- This mode is only available when printing 32-bit color data.*
- Printing with PhotoEnhance selected may increase the time required for printing, depending on your computer system and the amount of data contained in your image.*
- If you select Roll Paper as a Paper Source in the Page Setup dialog box, do not print your document with the PhotoEnhance mode on.*

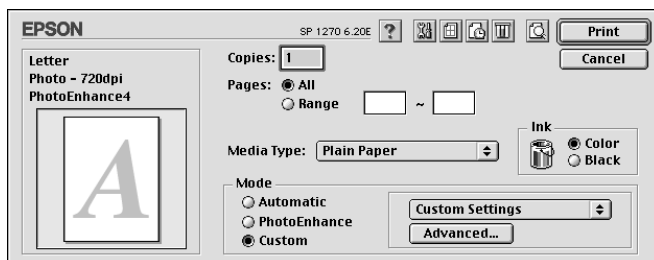
You can select from the following settings.

Standard	This setting provides standard image correction for most photos. Try this first.
People	This setting is best for photos of people.
Nature	This setting is best for outdoor scenery such as mountains, sky, and oceans.
Soft Focus	This setting makes your photos look as if they were taken with a soft-focus lens.
Sepia	This setting applies a sepia tone to your photos.

If you are printing photos taken with a digital camera, you can also select the Digital Camera Correction check box to give your printed images the smooth, natural appearance of photographs taken with a film camera.

Using the Custom mode

The Custom mode offers ready-made settings designed for printing text and graphs and for applying a color-matching method. You can also create and save your own custom settings.



You can select from the following ready-made settings.

Text/Graph	This setting is good for printing presentation documents such as graphs and charts.
Economy	This setting is best for printing drafts of text
ColorSync	This setting automatically adjusts printout colors to match colors on your screen.


Follow the steps below to select a Custom setting.

1. Verify the Media Type and Ink settings in the Print dialog box. For details, see “Making the Media Type setting” on page 29.
2. Click the Custom button in the Print dialog box. This enables the Custom Settings list, located below and to the right of the Custom radio button.
3. From the Custom Settings list, select the most appropriate setting for the type of document or image you will print.





4. When you choose a Custom setting, other settings such as Print Quality, Halftoning, and Color are made automatically. Changes to these settings are reflected in the display on the left side of the Print dialog box.

Previewing your printout

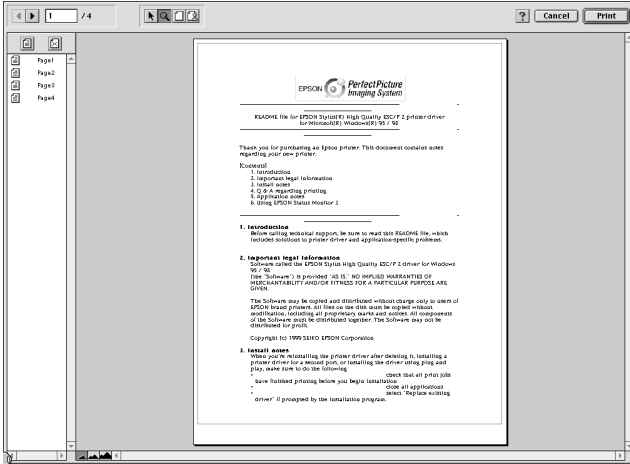
The Preview feature allows you to see how your document will look before actually printing it. Follow these steps to preview your document.

1. Make your printer driver settings.
2. Click the  Preview icon button in the Print dialog box. The Print button changes into a Preview button.

Note:

Use the  Preview icon button to switch between the  Print,  Preview, and  Save File modes. Click the icon to select the mode you want. For information on the Save File mode, see “Saving print data in files” on page 39.

3. Click the Preview button. The Preview dialog box appears and displays a preview of your document.




The Preview dialog box contains six icon buttons you can use to perform the following functions.

	Selection	This feature lets you select, move, and resize watermarks.
	Zoom	This feature enlarges the or reduces the size of the previewed page.
	Margin Display/ Non-Display	This feature displays or hides borderlines which indicate the printable area.
	Watermark Editing	This button opens the Watermark Edit box. This dialog box allows you to add watermarks to the document, and to change any of the current watermark settings.
	Add Page Remove Page	These buttons let you select or deselect the pages you want to print from the list on the left side of the preview window.





4. If you are satisfied with the previewed image, click Print.


If you are not satisfied with the appearance of the image, click Cancel. The Preview and Print dialog boxes close with the current print settings preserved. Open the Print dialog box again to make additional changes to the print settings.


Saving print data in files

You can save print data in a file by using the  Save File icon button in the Print dialog box. This feature lets you print the data at a later time simply by double-clicking the saved file. Follow these steps.

Note:

Use the  Preview icon button to switch between the  Print,  Preview, and  Save File modes. Click the icon to select the mode you want.

1. Make your printer driver settings.
2. Click the  Preview icon button in the Print dialog box repeatedly until the Print button changes into the Save File button.
3. Click the Save File button.
4. Select the location where you want to save the file, then type a file name into the Save As box and click Save.



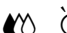

When you want to print the data, double-click the file to open EPSON Monitor 3. Click the  Resume button to send the data to the printer.

Replacing Ink Cartridges

This printer uses ink cartridges equipped with IC chips. The IC chip accurately monitors the amount of ink used by each cartridge, so even if a cartridge is removed and later inserted again, all of its ink can be used. However, some ink is consumed each time the cartridge is inserted because the printer automatically checks reliability.

The printer's indicator lights will inform you when it is time to obtain a replacement ink cartridge and when it is time to replace an empty cartridge. You can also check ink levels and start the ink cartridge replacement procedure from your computer using the Status Monitor 3 utility. See the online *Reference Guide* for more information.

This table describes the status of the lights on your printer and the actions you need to take.

Lights	Action
	Obtain a replacement black ink cartridge (T007 or T010).
	Replace the empty black ink cartridge.
	Obtain a replacement color ink cartridge (T009).
	Replace the empty color ink cartridge.

● = on, ◌ = flashing

**Warning:**

- ❑ *Keep ink cartridges out of the reach of children. Do not allow children to drink from or otherwise handle the cartridges.*
- ❑ *Be careful when you handle the used ink cartridges, as there may be some ink around the ink supply port. If ink gets on your skin, wash the area thoroughly with soap and water. If ink gets into your eyes, flush them immediately with water. If discomfort or vision problems remain after a thorough flushing, see a doctor immediately.*

**Caution:**

- ❑ *EPSON recommends the use of genuine EPSON ink cartridges. Other products not manufactured by EPSON may cause damage to your printer not covered by EPSON's warranties.*
- ❑ *Leave the old cartridge installed in the printer until you have obtained a replacement; otherwise, ink remaining in the print head nozzles may dry out.*
- ❑ *Do not refill the ink cartridges. The ink cartridges for this printer are not for refill. The printer calculates the amount of ink remaining using an IC chip on the ink cartridge: Even if the cartridge is refilled, the amount of ink remaining will not be recalculated by the IC chip and the amount of ink available for use will not change.*

Note:





- ❑ *You cannot continue printing with one ink cartridge empty, even if the other cartridge still contains ink. Before printing, replace the empty cartridge.*
- ❑ *In addition to the ink used during document printing, ink is consumed during the print head cleaning operation and during the self-cleaning cycle which is performed when the printer is turned on, and during ink charging when the ink cartridge is installed in the printer.*

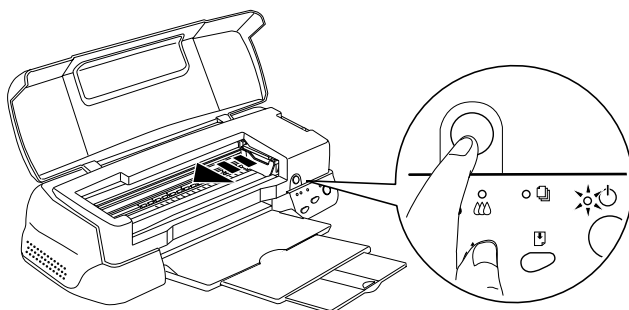
For more information about ink cartridges, see “When handling the ink cartridges” on page 3.

To replace an ink cartridge using the orange ink cartridge replacement button, follow the steps below.

Note:

You can also replace an ink cartridge from your computer using EPSON Status Monitor 3. Click the How to button in the Status Monitor’s Printer Status window, then follow the on-screen instructions.

1. Make sure the printer is on. The  power light should be on, but not flashing. (Determine which cartridge needs to be replaced as indicated by the  black and  color ink out lights.)
2. Lower the output tray at the front of the printer, then open the printer cover.
3. Press the orange ink cartridge replacement button. The print head moves left to the ink cartridge replacement position, and the  power light begins flashing.

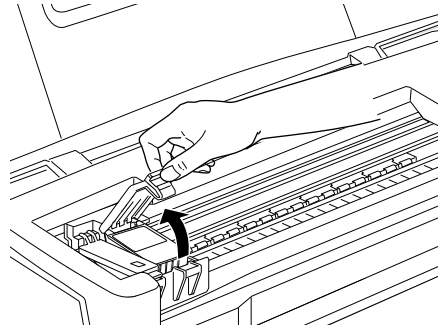


Caution:

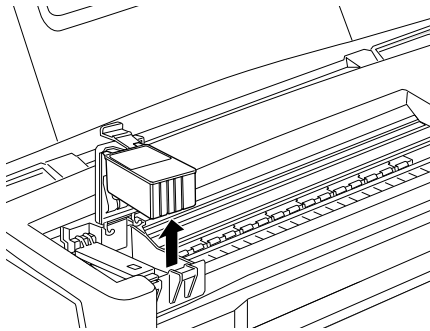
Do not move the print head by hand as this may damage the printer. Always press the orange ink replacement button to move it.

4. Lift up the clamp that holds the cartridge you want to replace as far as it will go. The cartridge rises partly out of the cartridge holder.

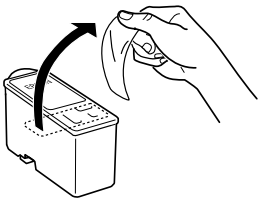
The illustration shows color ink cartridge replacement. To replace the black ink cartridge, lift up only the smaller clamp on the left.



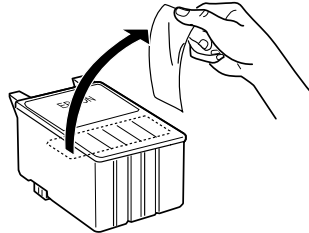
5. Lift the cartridge out of the printer and dispose of it properly. Do not take the used cartridge apart or try to refill it.



6. Remove the new ink cartridge from its protective bag. Next, remove only the yellow tape seal from the cartridge.



black ink cartridge (T007)

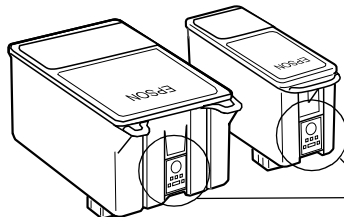


color ink cartridge (T009)



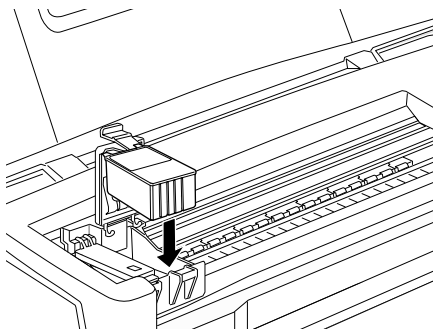
Caution:

- ❑ *You must remove the yellow tape seal from the cartridge before installing it; otherwise, the cartridge will become unusable and you will be unable to print.*
- ❑ *If you have installed an ink cartridge without removing the yellow tape seal, you must remove the cartridge and install a new one. Prepare the new cartridge by removing the yellow tape seal, then install it in the printer.*
- ❑ *Do not remove the blue portion of the tape seal from the top of the cartridge; otherwise, the print head may become clogged and be unable to print.*
- ❑ *Do not remove the tape seal from the bottom of the cartridge; otherwise, ink will leak.*
- ❑ *Do not touch the green chip on the side of the cartridge; otherwise, normal operation and printing may not be possible.*



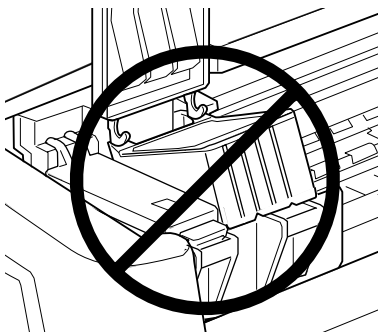
Do not touch this part.

7. Align the tabs on the ink cartridge so that they are resting on the tabs protruding from the base of the opened ink cartridge clamp. Do not apply excessive force to the cartridge.



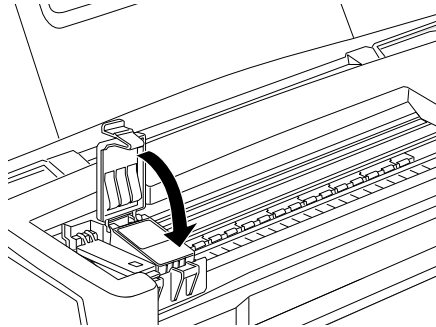
Caution;

Make sure the ink cartridge tabs are not under the tabs protruding from the base of the opened ink cartridge clamp, as this could damage the clamp.





8. Press the ink cartridge clamp down until it locks into place.

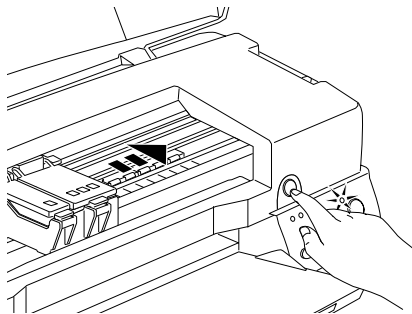
The illustration shows color ink cartridge replacement. To replace the black ink cartridge, replace only the cartridge held by the smaller clamp on the left.



Caution:


After you remove an ink cartridge from the printer, please insert a new one immediately. If no cartridge is present, the print head may dry out and become unable to print.

9. Press the orange ink cartridge replacement button. The printer moves the print head and begins charging the ink delivery system. This process takes about one minute to complete. When the ink charging process is finished, the printer returns the print head to its home position, the  power light stops flashing and stays on, and the black and  color lights turn on.





Caution:

The  power light continues to flash while the printer performs the ink charging operation. Never turn off the printer while this light is flashing. Doing so can result in incomplete charging of ink.

10. Close the printer cover.

Maintenance

Checking the Print Head Nozzles

If you find that the printed image is unexpectedly faint or dots in the printed image are missing, you may be able to identify the problem by checking the print head nozzles.

You can check the print head nozzles from your computer using the Nozzle Check utility in the printer software, or from the printer itself by using the printer's control panel buttons.

Using the Nozzle Check utility

Follow the steps below to use the Nozzle Check utility.


Note:

Do not use the Nozzle Check utility while printing is in progress; otherwise, your printout may be marred.

For Windows users


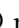
1. Make sure A4 or Letter size paper is loaded in the sheet feeder.
2. Click the Utility tab in the printer software, then click the Nozzle Check button.
3. Follow the instructions on your screen.

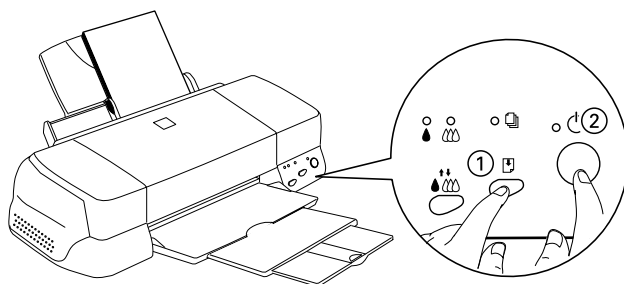
For Macintosh users

1. Make sure A4 or Letter size paper is loaded in the sheet feeder.
2. Click the  Utility icon button in the Print or Page Setup dialog box, then click the Nozzle Check button.
3. Follow the instructions on your screen.

Using the control panel buttons

Follow the steps below to check the print head nozzles using the control panel buttons.

1. Turn off your printer.
2. Make sure that A4 or Letter size paper is loaded in the sheet feeder.
3. Hold down the  load/eject button (① in the illustration below) and press the  power button (② in the illustration below) to turn on the printer.



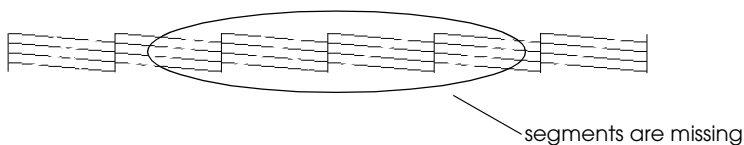
4. Then release both buttons.

The printer prints an operation check page including your printer's ROM version information, the ink counter code, and a nozzle check pattern. Below are sample printouts.

Good sample



Print head needs to be cleaned



The above sample is in black and white, but the actual test prints in color (CMYK).



If the nozzle check page does not print satisfactorily (for example, if any segment of the printed lines is missing) there is a problem with the printer. This could be a clogged ink nozzle or a misaligned print head. See the next section for details on cleaning the print head. For information on aligning the print head, see “Aligning the Print Head” on page 54.

Cleaning the Print Head

If you find that the printed image is unexpectedly faint or dots in the printed image are missing, you may be able to solve these problems by cleaning the print head, which ensures that the nozzles are delivering ink properly.

You can clean the print head from your computer with the Head Cleaning utility in the printer software, or from the printer itself by using the printer's control panel buttons.



Note:

- ❑ *Print head cleaning uses both color and black ink. To avoid wasting ink, clean the print head only if print quality declines; for example, if the printout is blurry or the color is incorrect or missing.*
- ❑ *Use the Nozzle Check utility first to confirm that the print head needs to be cleaned. This saves ink.*
- ❑ *When the  black or  color ink out light is flashing or on, you cannot clean the print head. Replace the appropriate ink cartridge first.*
- ❑ *Do not start the Head Cleaning or Nozzle Check utility while printing is in progress; otherwise, your printout may be marred.*



Using the Head Cleaning utility

Follow the steps below to use the Head Cleaning utility.

For Windows users




1. Make sure that the printer is on and both  black and  color ink out lights are off.

Note:

If the  black or  color ink out light is flashing, you can not clean the print head. Replace the appropriate ink cartridge first.




2. Click the Utility tab in the printer software, then click the Head Cleaning button.
3. Follow the messages on your screen.

For Macintosh users



1. Make sure that the printer is on, and the  black and  color ink out lights are off.
2. Click the  Utility icon button in the Print or Page Setup dialog box, then click the Head Cleaning button.
3. Follow the on-screen instructions.


Using the control panel buttons

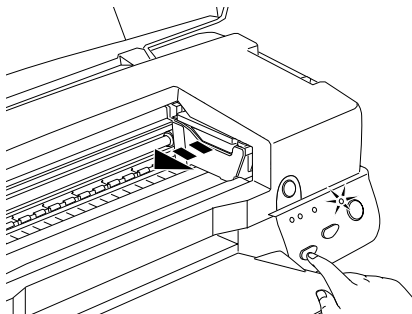
Follow the steps below to clean the print head using the control panel buttons.


1. Make sure that the  power light is on and that both the  black and  color ink out lights are off.

Note:

If the  black or  color ink out light is flashing or on, you cannot clean the head.


2. Hold down the  cleaning button for three seconds.




The printer starts cleaning the print head and the  power light begins flashing. Print head cleaning takes about thirty seconds to complete.



Caution:

Never turn off the printer while the  power light is flashing. Doing so may damage the printer.

3. When the  power light stops flashing, print a nozzle check pattern to confirm that the head is clean and to reset the cleaning cycle.

If print quality hasn't improved after repeating this procedure four or five times, turn the printer off and leave it alone overnight. Then do the head cleaning again.

If the print quality still has not improved, one or both of your ink cartridges may be old or damaged and may need to be replaced. To replace an ink cartridge before it is empty, see "Replacing Ink Cartridges" in the online *Reference Guide*.

If print quality remains a problem after replacing the ink cartridges, contact your dealer.

Note:

To maintain print quality, we recommend turning on the printer for at least one minute every month.

Aligning the Print Head

If you notice a misalignment of vertical lines, you may be able to solve this problem from your computer using the Print Head Alignment utility in your printer software. Follow the directions below.


Note:

Do not start the Print Head Alignment utility while printing is in progress; otherwise, your printout may be marred.

For Windows users

1. Make sure A4 or Letter size plain paper is loaded in the sheet feeder.
2. Click the Utility tab in the printer software, then click the Print Head Alignment button.
3. Follow the messages on your screen to align the print head.

For Macintosh users

1. Make sure A4 or Letter size plain paper is loaded in the sheet feeder.
2. Click the  Utility icon button in the Print or Page Setup dialog box, then click the Print Head Alignment button.
3. Follow the messages on your screen to align the print head.

Troubleshooting

Correcting USB Problems

Make sure your computer is a Windows 98 pre-installed model

Your computer must be a Windows 98 pre-installed model. You may not be able to install or run the USB Printer Driver on a computer which is not equipped with a USB port or which is upgraded from Windows 95 to 98.

For details about your computer, contact your dealer.

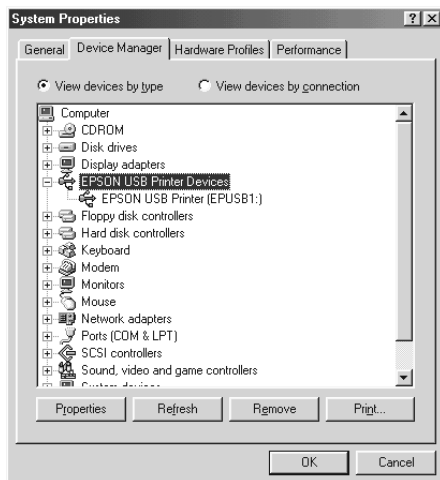
Make sure that EPSON USB Printer Devices appears in the Device Manager menu

If you canceled the plug-and-play driver installation before the procedure was completed, either the USB printer device driver or the printer driver may be incorrectly installed.

Follow the steps below to check the installation and reinstall the drivers.

1. Turn the printer on. Plug the USB cable into the printer and the computer.
2. Right-click the My Computer icon on your desktop, then click Properties.
3. Click the Device Manager tab.

If your drivers are correctly installed, EPSON USB Printer Devices should appear in the Device Manager menu.



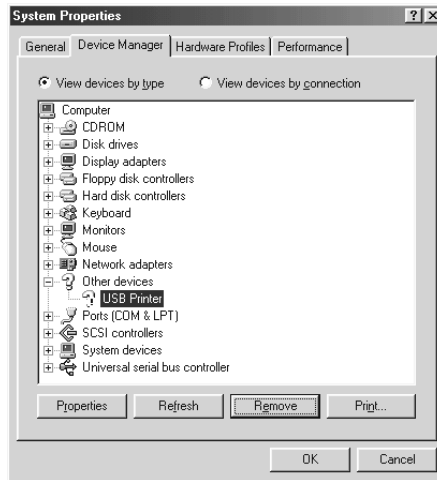
If EPSON USB Printer Devices does not appear in the Device Manager menu, click the plus (+) sign beside Other Devices to view the installed devices.



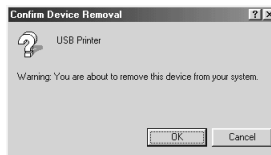
If USB Printer appears under Other Devices, the USB printer device driver is not installed correctly. If EPSON Stylus Photo 1270 appears, the printer driver is not installed correctly.

If neither USB Printer nor EPSON Stylus Photo 1270 appears under Other Devices, click Refresh or unplug the USB cable from the printer, then plug it into the printer again.

- Under Other Devices, click USB Printer or EPSON Stylus Photo 1270, then click Remove. Then click OK.



- When the following dialog box appears, click OK. Then click OK to close the Properties window.



- Turn off the printer and restart your PC. Then, reinstall the driver from the beginning, following the instructions in the *Setup Guide*.






Printer does not work correctly with a USB cable


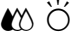



If your printer does not work correctly with a USB cable, try one or more of these solutions:

- ❑ Use the recommended USB cable as described in “System Requirements” in the online *Reference Guide*.
- ❑ If you use a USB hub, connect the printer to the first tier of the hub, or connect the printer to the computer’s USB port directly.
- ❑ For PCs, try reinstalling the USB printer device driver and the printer software. First, uninstall EPSON Printer Software using the Add/Remove Programs utility in the Control Panel, then uninstall EPSON USB Printer Devices. Next, reinstall the software as described in *Setup Guide*. If EPSON USB Printer Devices is not registered in the Add/Remove Programs list, access the CD-ROM and double-click `epusbun.exe` in the Win 9X folder. Then follow the on-screen instructions.

Error Indicators

You can identify many common printer problems using the lights on your printer's control panel. If your printer stops working and the lights are on or flashing, use the following table of panel light patterns to diagnose the problem, then follow the recommended corrective measures.

Lights	Problem and Solution	
	Paper out	
	No paper is loaded in the printer.	Load paper in the sheet feeder, then press the  load/eject button. The printer resumes printing and the light goes out.
	Paper jam	
	Paper has jammed in the printer.	Press the  load/eject button. The printer ejects the jammed paper and then resumes printing. If the error is not cleared, open the printer cover and remove the jammed paper. Then reload paper in the sheet feeder and press the E load/eject button. The printer resumes printing.
	Ink low (black ink cartridge)	
	The black ink cartridge is nearly empty.	Obtain a replacement black ink cartridge (T007 or T010).

	Ink out (black ink cartridge)	
	The black ink cartridge is empty or not installed.	Replace the black ink cartridge with a new one (T007 or T010). See "Replacing Ink Cartridges" on page 40.
	Wrong ink (black ink cartridge)	
	The installed black ink cartridge cannot be used by this printer.	Use the appropriate black ink cartridge (T007 or T010). See "Replacing Ink Cartridges" on page 40.
	Ink low (color ink cartridge)	
	The color ink cartridge is nearly empty.	Obtain a replacement color ink cartridge (T009).
	Ink out (color ink cartridge)	
	The color ink cartridge is empty or not installed.	Replace the color ink cartridge with a new one (T009). See "Replacing Ink Cartridges" on page 40.
	Wrong ink (color ink cartridge)	
	The installed color ink cartridge cannot be used by this printer.	Use the appropriate color ink cartridge (T009). See "Replacing Ink Cartridges" on page 40.
	Carriage error	
	The print head carriage is obstructed by jammed paper or other foreign material and cannot return to the home position.	Turn off the printer. Open the printer cover and remove any paper from the paper path by hand. Then turn the printer back on. If the error is not cleared, contact your dealer.
	Unknown printer error	
	An unknown printer error has occurred.	Turn off the printer, and contact your dealer.

● = on, ○ = off, ◌ = flashing

Typical Problems and Solutions

Most printer problems have simple solutions. Find the problem in the list below and apply the recommended solution. For more information, see “Troubleshooting” in the online *Reference Guide*.

Print quality problems

If you are having print quality problems, try the solutions offered here.

Horizontal banding

Try one or more of these solutions:

- Make sure the printable side of the paper is face up in the sheet feeder.
- Run the Head Cleaning utility to clear any clogged ink nozzles.



Vertical misalignment

Try one or more of these solutions:

- Make sure the printable side of the paper is face up in the sheet feeder.
- Run the Print Head Alignment utility.
- Turn off the High Speed setting in your printer driver. For instructions, see the printer driver’s online help for Windows. For Macintosh, see “Using the Advanced settings” in the online *Reference Guide*.

Color gaps

Try one or more of these solutions:


- ❑ Make sure your paper is not damaged, dirty, or too old.
- ❑ Run the Head Cleaning utility to clear any clogged ink nozzles.
- ❑ Check the  black and  color ink out lights. If a light is flashing, replace the ink cartridge. See “Replacing Ink Cartridges” on page 40.

Blurry or smeared printout

Try one or more of these solutions:

- ❑ Make sure the printable side of the paper is face up in the sheet feeder.
- ❑ Make sure your paper is not damaged, dirty, or too old.
- ❑ Set the adjust lever to the “+” position, and make sure the Media Type setting in your printer driver is correct.

Paper feed or paper jam problems

If the printer doesn't feed paper, feeds multiple pages, or the paper is jammed, remove and reload the stack of paper, then press the  load/eject button. Also make sure of the following:

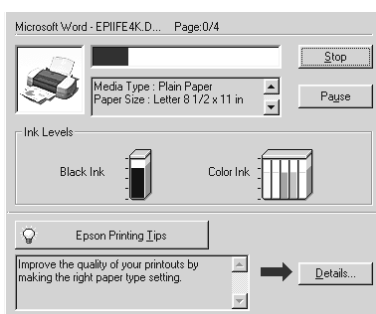
- ❑ The paper isn't old or creased.
- ❑ Paper isn't loaded above the arrow on the left edge guide.
- ❑ The edge guides are set correctly.
- ❑ The paper isn't too thin or rough. Use paper that meets the paper requirements for this printer. See the online *Reference Guide* for paper specifications.

Canceling Printing

If the printouts are not what you expected and display incorrect or garbled characters or images, you may need to cancel printing. To cancel printing, follow the instructions below.

For Windows 95, 98 and NT 4.0

When you send a print job to the printer, the Progress Meter appears on your computer screen.



Click the Stop button to cancel printing.


For Macintosh

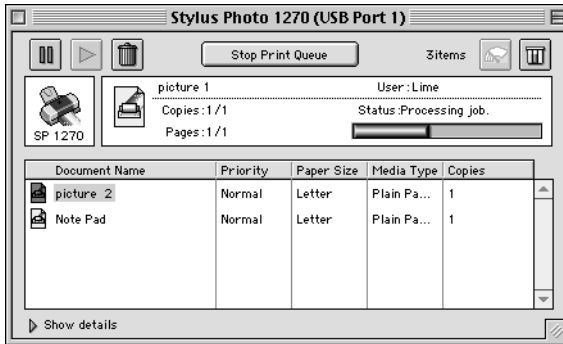
The procedure for canceling printing for Macintosh varies, depending upon whether background printing is on or off.

When background printing is on

1. Select EPSON Monitor3 from the application menu.



2. Press the \odot power button to turn off the printer.
3. Click the name of the document which is printing in the Document Name list, then click the  Stop icon button to cancel the print job.



When background printing is off

1. Press the \odot power button to turn off the printer.
2. Hold down the ⌘ command key on your keyboard and press the period (.) key to cancel the print job.

Where to Get Help

If your printer is not operating properly and you cannot solve the problem using the troubleshooting information in your printer documentation, contact customer support services for assistance.

Customer support will be able to help you much more quickly if you give them the following information.

- Serial number of your printer
(The serial number label is on the back of the printer.)
- Printer model
- Brand and model of your computer
- Printer software version
(Click About in your printer driver.)
- Windows version you are using
- Software application(s) you normally use with your printer and their version number(s)

For United Kingdom and the Republic of Ireland Users

If you purchased your product in the UK or the Republic of Ireland, EPSON (UK) LTD provides a range of customer services and technical support.

Support Via the World Wide Web

- For information on the latest EPSON products, software drivers, on-line user guides and answers to frequently asked questions:
<http://www.epson.co.uk>
- To email EPSON Technical Support:
<http://www.epson.co.uk/support/email/>

- ❑ For a full list of EPSON Customer and Warranty Support services:
<http://www.epson.co.uk/support/>

Support Via Telephone

Our Customer and Warranty Support teams can be contacted by calling 0870 163 7766 in the UK or 0044 0870 163 7766 from the Republic of Ireland. They can provide the following services:

- ❑ Technical information on installing, configuring and operating your EPSON products
- ❑ Arranging for faulty EPSON products to be repaired within the warranty period

Pre Sales Enquiry Desk

Our Enquiry Desk team can be contacted by calling 0800 220546 in the UK or 1 800 409132 from the Republic of Ireland, by faxing 01442 227271 in the UK or 0044 1442 227271 from the Republic of Ireland, and via Email at info@epson.co.uk. They can provide the following information:

- ❑ Pre sales information and literature on new EPSON products (also available via our world wide web site at <http://www.epson.co.uk>)
- ❑ Where to purchase genuine EPSON consumables, accessories, and options

For Australian Users

EPSON Australia wishes to provide you with a high level of Customer Service. As well as the user's guide, we provide the following sources for obtaining information:

EPSON FAXBACK

EPSON FAXBACK will fax you the latest specifications and pricing for most EPSON products offered in Australia. There is also technical information including details of the latest software and drivers available. Phone (02) 9903 9075 and the system will guide you through a number of choices before faxing the information to your fax machine.

EPSON Bulletin Board System

This is where you can download the latest software and drivers. Visit the BBS to check out the latest versions. If you have a modem, phone (02) 9417 5090.

Internet URL <http://www.epson.com.au>

Access the EPSON Australia World Wide Web pages. Worth taking your modem here for the occasional surf! You can get the same information as offered on the EPSON FAXBACK and the EPSON Bulletin Board plus more.

Your dealer

Don't forget that your dealer can often help identify and resolve problems. The dealer should always be the first call for advice on problems. They can often solve problems quickly and easily as well as give you advice on the next step to take.

EPSON Helpdesk

EPSON Helpdesk is provided as a final backup to make sure our clients have access to advice. Operators on the Helpdesk can aid you in diagnosing hardware and software problems. They can also advise you on the latest EPSON products and where the nearest dealer or service agent is located. Many types of queries are answered here.

The Helpdesk numbers are:

Phone: (02) 9903 9040

Fax: (02) 9903 9189

We encourage you to have all the relevant information on hand when you ring. The more information you prepare, the faster we can help solve the problem. This information includes the *User's Guide* for your EPSON product, type of computer, operating system, application programs, and any other information you feel is required.

For India Users

Contacts for information, support and services are:

World Wide Web (www.epson.co.in)

Information on product specifications, drivers for download, Frequently Asked Questions (FAQ) Product Enquiry and Technical Query are available.

Epson India Bangalore Head Office:

Phone: 080 5095465

Fax: 080 5095474

For Malaysia Users

Contacts for information, support and services are:

World Wide Web (www.epson.com.my)

Information on product specifications, drivers for download, Frequently Asked Questions (FAQ) and Email Enquiry are available.

Epson Trading Shah Alam Head Office

Phone: 03 5191366

Fax: 03 5191281

For Singapore Users

Sources of information, support and services available from Epson Singapore are:

World Wide Web (www.epson.com.sg)

Information on product specifications, drivers for download, Frequently Asked Questions (FAQ), Sales Enquiry, and Technical Email Support are available.

Epson HelpDesk < Phone: (065) 8323111 >

Our HelpDesk team can help you with the following over the phone:

Sales enquiry and product information

Product usage questions or problem

Enquiries on repair service and warranty

For Hong Kong Users

To obtain technical support as well as other after-sales services, users are welcome to contact EPSON Hong Kong Limited.

Internet home page

EPSON Hong Kong has established a local home page in both Chinese and English on the Internet to provide users with the following information:

- Product information
- Answers to Frequently Asked Questions (FAQs)
- Latest versions of EPSON printer drivers

Users can access our World Wide Web home page at:
<http://www.epson.com.hk>

Electronic bulletin board system

An electronic bulletin board system (BBS) is also available to obtain printer information and the latest versions of printer drivers. You can log on to the following number for the BBS service:

BBS: (852) 2827-4244

Technical Support Hotline

You can also contact our technical staff at the following telephone and fax numbers:

Phone: (852) 2585-4399

Fax: (852) 2827-4383

For Philippines Users

To obtain technical support as well as other after sales services, users are welcome to contact the EPSON Philippines Representative Office at the telephone and fax numbers below:

Phone: (632) 813-6552

Fax: (632) 813-6545

BBS: (632) 814-0595

Options and Consumable Products

Options and Consumable Products

Options

The following options are available for your printer.

Interface cables

EPSON supplies the following interface cables. However, you can use any interface cable that meets these specifications. See your computer manual for any additional requirements.

- ❑ Parallel Interface Cable (shielded) C83602* from D-SUB 25-pin (computer) to 36-pin Amphenol 57 Series (printer)
- ❑ USB Interface Cable (shielded) C83623* from Series A 4-pin (computer) to Series B 4-pin (printer) Note:

Note:

- ❑ *The asterisk (*) is a substitute for the last digit of the product number, which varies by location.*
- ❑ *Depending on your geographic location, one or both of these cables may not be supplied.*



Caution:

Use only interface cables which meet the specifications listed above. Using other cables not covered by EPSON warranties may cause the printer to malfunction.

Roll Paper Holder

A Roll Paper Holder C81106* is available from EPSON for your printer.

Consumable products

The following ink cartridges and EPSON special media are available for your printer.

Ink cartridges

You can use the following cartridges with your printer.

Black ink cartridge	Standard Capacity	T007
	Light Capacity	T010
Color ink cartridge		T009

Note:

The product numbers of ink cartridges may vary by location.

EPSON special media

EPSON offers specifically designed media for ink jet printers to meet most high-quality printing needs.

EPSON Premium Ink Jet Plain Paper (A4)	S041214
EPSON 360 dpi Ink Jet Paper (A4)	S041059 S041025
EPSON 360 dpi Ink Jet Paper (Letter)	S041060 S041028
EPSON 360 dpi Ink Jet Paper (A3)	S041065 S041046
EPSON 360 dpi Ink Jet Paper (Super A3/B)	S041066 S041047
EPSON Photo Quality Ink Jet Paper (A4)	S041061 S041026
EPSON Photo Quality Ink Jet Paper (Letter)	S041062 S041029
EPSON Photo Quality Ink Jet Paper (Legal)	S041067 S041048
EPSON Photo Quality Ink Jet Paper (A3)	S041068 S041045

EPSON Photo Quality Ink Jet Paper (Super A3/B)	S041069 S041043
EPSON Photo Quality Ink Jet Paper (B)	S041070 S041044
EPSON Photo Quality Ink Jet Card (A6)	S041054
EPSON Photo Quality Ink Jet Card (5 × 8")	S041121
EPSON Photo Quality Ink Jet Card (8 × 10")	S041122
EPSON Photo Quality Self Adhesive Sheet (A4)	S041106
EPSON Ink Jet Note Cards A6 (with envelopes)	S041147
EPSON Ink Jet Greeting Cards 5 × 8" (with envelopes)	S041148
EPSON Ink Jet Greeting Cards 8 × 10" (with envelopes)	S041149
EPSON Photo Quality Glossy Film (A4)	S041071
EPSON Photo Quality Glossy Film (Letter)	S041072
EPSON Photo Quality Glossy Film (A3)	S041073
EPSON Photo Quality Glossy Film (Super A3/B)	S041074
EPSON Photo Quality Glossy Film (B)	S041075
EPSON Photo Quality Glossy Film (A6)	S041107
EPSON Ink Jet Transparencies (A4)	S041063
EPSON Ink Jet Transparencies (Letter)	S041064
EPSON Photo Paper (A4)	S041140
EPSON Photo Paper (Letter)	S041141
EPSON Photo Paper (A3)	S041142
EPSON Photo Paper (Super A3/Super B)	S041143
EPSON Photo Paper (B)	S041156
EPSON Photo Paper (4 × 6")	S041134
EPSON Photo Paper (100 × 150 mm)	S041255
EPSON Photo Paper (200 × 300 mm)	S041254
EPSON Photo Paper (89mm × 7M)	S041281
EPSON Photo Paper (100mm × 8M)	S041279

EPSON Photo Paper (210mm × 10M)	S041280
EPSON Photo Paper (329mm × 10M)	S041233
EPSON Photo Paper Cards (A4)	S041177
EPSON Photo Stickers 16 (A6)	S041144
EPSON Photo Stickers 4 (A6)	S041176
EPSON Panoramic Photo Paper (210 × 594 mm)	S041145
EPSON Iron-On Cool Peel Transfer Paper (A4)	S041154
EPSON Iron-On Cool Peel Transfer Paper (Letter)	S041153 S041155
EPSON Iron-On Cool Peel Transfer Paper (A3)	S041238
EPSON Matte Paper-Heavyweight (A4)	S041256 S041258 S041259
EPSON Matte Paper-Heavyweight (Letter)	S041257
EPSON Matte Paper-Heavyweight (A3)	S041260 S041261 S041262
EPSON Premium Glossy Photo Paper (A4)	S041287 S041297
EPSON Premium Glossy Photo Paper (Letter)	S041286
EPSON Premium Glossy Photo Paper (A3)	S041288
EPSON Premium Glossy Photo Paper (B)	S041290
EPSON Premium Glossy Photo Paper (Super A3/ Super B)	S041289
EPSON Matte Paper-Heavyweight (Super A3 / Super B)	S041263 S041264 S041265
EPSON Ink Jet Back Light Film (A3)	S041131

Note:

The availability of special media varies by location.

EPSON OVERSEAS MARKETING LOCATIONS

EPSON AMERICA, INC.

20770 Madrona Ave.
P.O. Box 2842
Torrance, CA 90509-2842
Phone: (800) 922-8911
Fax: (310) 782-5220

EPSON UK LTD.

Campus 100, Maylands Avenue,
Hemel Hempstead, Herts,
HP2 7TJ, U.K.
Phone: (+44) 01442 261144
Fax: (+44) 01442 227227

EPSON DEUTSCHLAND GmbH

Zülpicher Straße 6,
40549 Düsseldorf Germany
Phone: (0211) 56030
Fax: (0211) 5047787

EPSON FRANCE S.A.

68 bis, rue Marjolin
92300, Levallois-Perret, France
Phone: 33.1.40.87.37.37
Telex: 610657

EPSON AUSTRALIA PTY. LTD.

70 GIBBES STREET, CHATSWOOD 2067 NSW.
Phone: 2-9903-9000
Fax: 2-9903-9177

EPSON SINGAPORE PTE. LTD.

No. 1 Temasek Avenue #36-00
Millenia Tower, Singapore 039192
Phone: (065) 33 77 911
Fax: (065) 33 41 185

EPSON HONG KONG LTD.

Rooms 4706-10, 47/F,
China Resources Bldg.,
26 Harbour Road, Wanchai, Hong Kong
Phone: 2585-4300
Fax: 2827-7083

EPSON TAIWAN TECHNOLOGY & TRADING LTD.

10F, No. 287 Nanking E. Road, Sec. 3,
Taipei, Taiwan, R.O.C.
Phone: (02) 717-7360
Fax: (02) 712-9164

EPSON ITALIA S.p.A.

V.le F.lli Casiraghi 427
20099 Sesto S.Giovanni
MI, Italy
Phone: 2-262331
Fax: 2-2440750

EPSON IBERICA S.A.

Av. de Roma, 18-26
08290 Cerdanyola del Valles
Barcelona, Spain
Phone: 582. 15.00
Fax: 582. 15.55

SEIKO EPSON CORPORATION**(Hirooka Office)**

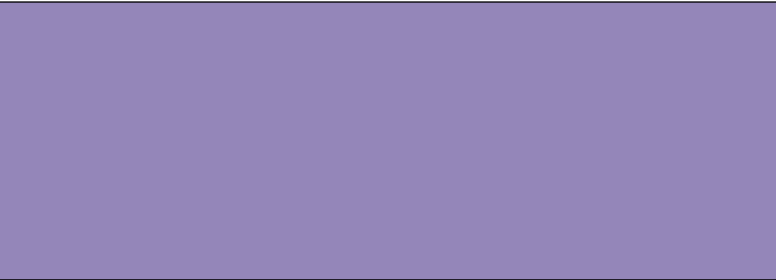
80 Harashinden, Hirooka
Shiojiri-shi, Nagano-ken
399-0785 Japan

EPSON PORTUGAL, S.A.

R. do Progresso, 471, 1° Perafita
4460 Matosinhos, Portugal
Phone: (02) 996 14 02
Fax: (02) 996 14 11

EPSON

Color Ink Jet Printer



EPSON STYLUS[™] PHOTO 1270

Daily Use

Printed in Japan
99.XX-XX